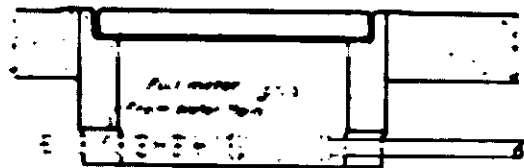
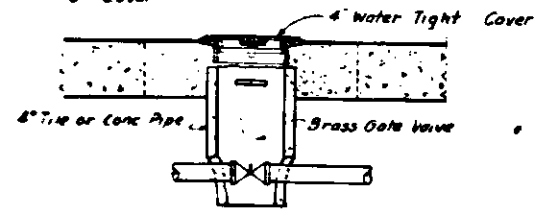


1. Use meter 3" size of 3" main line or more.  
 2. Use meter recommended by Meter Co.  
 3. Use 4" pipe for main line and 3" for branch.  
 4. Use 1/2" pipe for branch to meter.



WITH METER

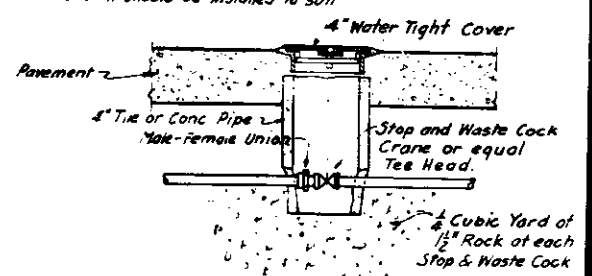
Where Meter is not required Main Shut-off should be installed as shown. If in ungraded area provide 16" square concrete slab at C.I. Cover.



WITHOUT METER

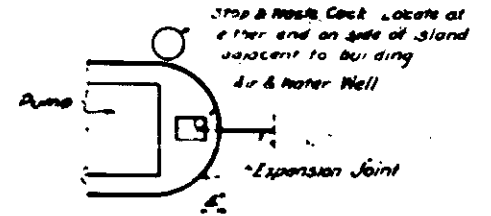
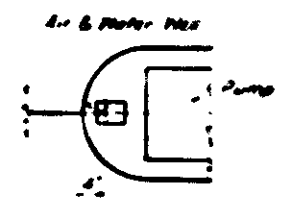
WATER SERVICE DETAILS

The water system should be so planned that a minimum number of Stop and Waste Cocks are required for draining. Wherever feasible one central drainage cock should be provided to take care of the entire water system. Locate Stop and Waste Cocks in the least objectionable places. If S & W drain is located in Asphaltic Pavement use the 4" Special C.I. Cover should be in the center of a 16" square minimum concrete slab. If large central drainage pit is desired it should be installed to suit.

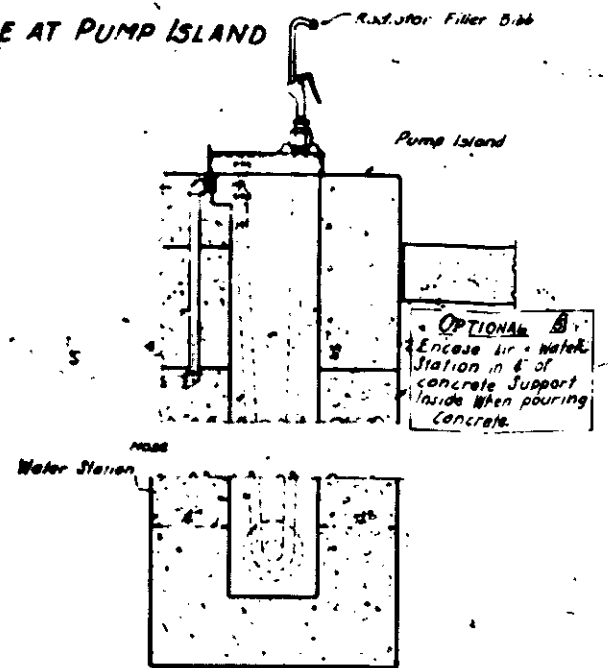


STOP AND WASTE COCK

Use only where freezing occurs.  
 Tee Head Wrench with Handle of sufficient length to be supplied to station when S & W Cock is installed.



PLAN OF SERVICE AT PUMP ISLAND



AIR AND WATER STATION

NOTE: Unless otherwise specified -  
 All fittings Std M.I. Galvanized Banded Pattern.  
 Standard Galvanized Pipe.  
 Unions Crane or equal.  
 Depth of Pipe to suit local conditions.

MARK	DATE	DESCRIPTION	APPROVED
10-21-47		Revised To Date	
13-25-47		DRINKING FOUNTAIN VENT & TAP ADDED	
17-8-47		Concrete Casing for 4" Air Station Updated	
1-2-47		Revised and Rearranged	

LIST OF CHANGES

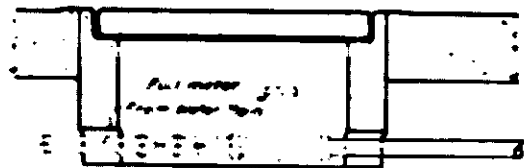
**SHELL OIL COMPANY**  
 INCORPORATED  
 ENGINEERING DEPT. SAN FRANCISCO

TYPICAL YARD PIPING DETAILS  
 FOR  
 SERVICE STATIONS

SCALE None  
 DATE Jan. 2 1948  
 DRAWN BY JSC  
 CHECKED BY JSC

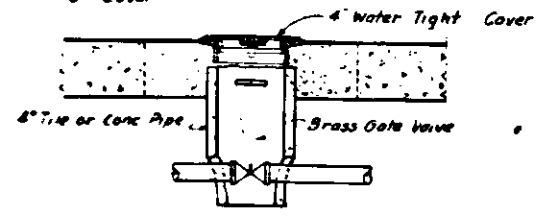
CHECK APPR. APPROVED  
 TRO BY  
 W-8054-7

1. The meter is to be of Standard type as shown.  
 2. The meter should be recommended by Water Co.  
 3. The size of the meter should be the size of  
 main pipe size in the main line. It should be installed  
 with 1" gap at 3" center to the main.



WITH METER

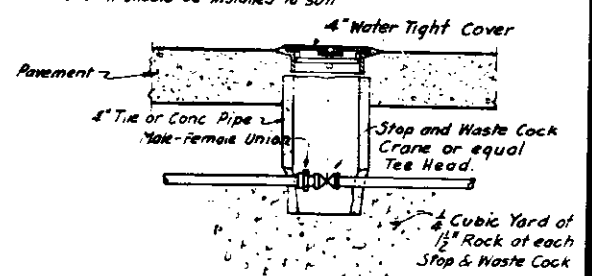
Where Meter is not required Main Shut-off  
 should be installed as shown. If in ungraded  
 area provide 16" square concrete slab at  
 C.I. Cover



WITHOUT METER

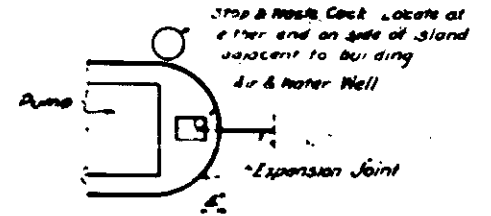
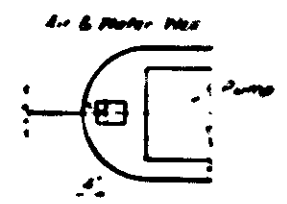
WATER SERVICE DETAILS

The water system should be so planned that a minimum  
 number of Stop and Waste Cocks are required for draining.  
 Wherever feasible one central drainage cock should be  
 provided to take care of the entire water system.  
 Locate Stop and Waste Cocks in the least objectionable places.  
 If S & W drain is located in Asphaltic Pavement use the 4"  
 Special C.I. Cover should be in the center of a 16" square  
 minimum concrete slab. If large central drainage pit is  
 desired it should be installed to suit.

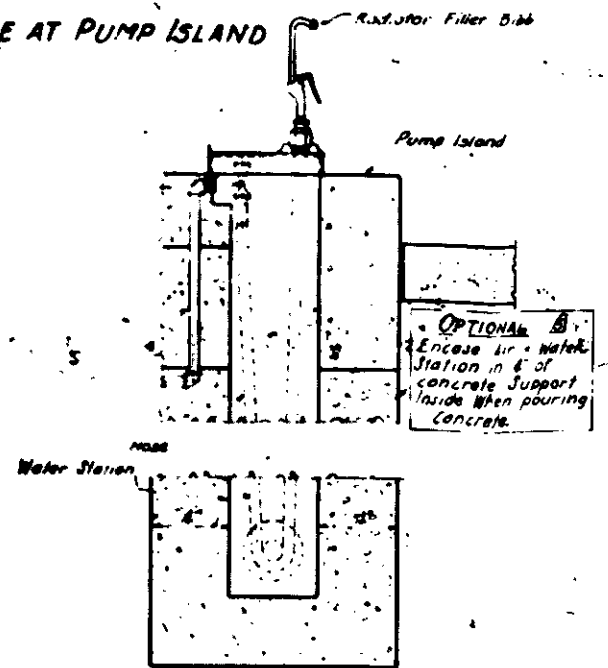


STOP AND WASTE COCK

Use only where freezing occurs  
 Tee Head Wrench with Handle of sufficient length  
 to be supplied to station when S & W Cock is installed.



PLAN OF SERVICE AT PUMP ISLAND



AIR AND WATER STATION

NOTE: Unless otherwise specified -  
 All fittings Std M.I. Galvanized Banded Pattern.  
 Standard Galvanized Pipe.  
 Unions Crane or equal.  
 Depth of Pipe to suit local conditions.

MARK	DATE	DESCRIPTION	APPROVED
10-21-47		Revised To Date	
13-25-47		DRINKING FOUNTAIN VENT & TAP ADDED	
17-8-47		Concrete Casing for 4\"/>	

LIST OF CHANGES

**SHELL OIL COMPANY**  
 INCORPORATED  
 ENGINEERING DEPT. SAN FRANCISCO

TYPICAL YARD PIPING DETAILS  
 FOR  
 SERVICE STATIONS

SCALE None  
 DATE Jan. 2 1948  
 DRAWN BY JSC  
 CHECKED BY JSC

CHECK APPR. APPROVED  
 TRO BY  
 W-8054-7